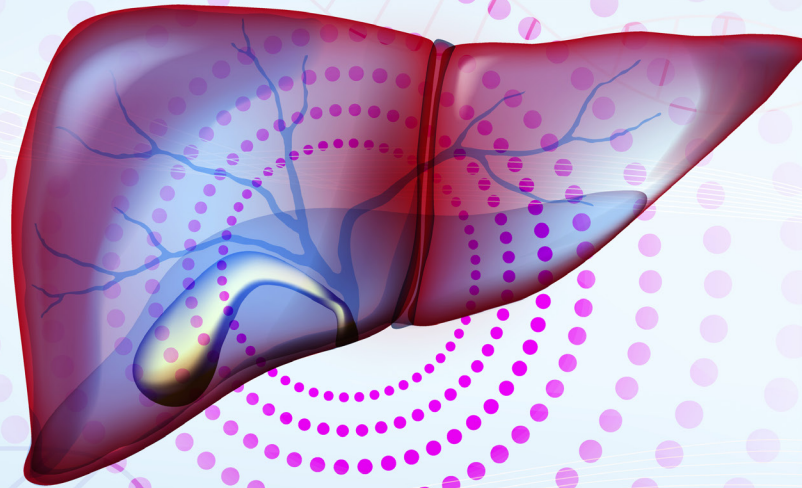


2025

METABOLIC HEALTH IN MOTION



FRIDAY, SEPTEMBER 19-20, 2025
8 AM - 5 PM

HYATT REGENCY
300 EAST 9TH STREET
CORALVILLE, IOWA

PROVIDED BY:
The University of Iowa Roy J. and Lucille A. Carver College of Medicine
Department of Internal Medicine-Division of Gastroenterology and Hepatology

SPONSORED BY:
International Programs and the Stanley-UI Foundation Support Organization

ENDORSED BY:
International Liver Transplantation Society (ILTS)

IOWA
HEALTH CARE

OVERVIEW

Metabolic associated steatotic liver disease (MASLD) has become the most common chronic liver disease worldwide, affecting nearly a quarter of the global population. The rising incidence of obesity, diabetes, and metabolic syndrome has driven this surge, making MASLD a leading cause of advanced liver disease, including cirrhosis and hepatocellular carcinoma. As these conditions progress, MASLD is expected to surpass alcohol and viral hepatitis as the leading indication for liver transplantation globally, contributing significantly to healthcare burdens. Liver transplant remains the only effective curative treatment for decompensated-cirrhosis, and it is a limited resource. That, in combination with the particular challenges that MASLD patients' management pose, make it indispensable to focus on increased awareness to promote early diagnosis of MASLD and preventive strategies. Aimed at the medical community, a series of lectures to review the state of the art of this important issue will be scheduled. Different levels of care and several medical specialties will be involved to provide a holistic overview. Over the course of two days, international expert speakers will review the state of the art in MASLD. This update will include epidemiology, risk factors, etiology, disease progression, lifestyle changes (dietary modifications, exercise programs), pharmacological treatments, endoscopic treatments, surgical treatments, liver transplantation, donation and outcomes.

TARGET AUDIENCE

Specialties - Anesthesia, Cardiovascular Disease, Family Medicine, Internal Medicine, Surgery

Professions - Nurse, Nurse Practitioner, Physician, Physician Assistant

CREDITS

AMA PRA Category 1 Credits™ (13.50 hours)

AAPA Category 1 CME credit (13.50 hours)

ANCC Contact Hours (13.50 hours)

Non-Physician Attendance (13.50 hours)

DISCLOSURE POLICY: University of Iowa Roy J. and Lucille A. Carver College of Medicine adheres to the ACCME's Standards for Integrity and Independence in Accredited Continuing Education. Any individuals in a position to control the content of a CE activity, including faculty, planners, reviewers or others are required to disclose all financial relationships with ineligible companies whose primary business is producing, marketing, selling, re-selling, or distributing healthcare products used by or on patients. All relevant financial relationships have been mitigated prior to the commencement of the activity.

ACCREDITATION



In support of improving patient care, the University of Iowa Roy J. and Lucille A. Carver College of Medicine is jointly accredited by the Accreditation Council for Continuing Medical Education (ACCME), the Accreditation Council for Pharmacy Education (ACPE), and the American Nurses Credentialing Center (ANCC), to provide continuing education for the healthcare team.

Nurse: The University of Iowa Roy J. and Lucille A. Carver College of Medicine designates this activity for a maximum of 13.50 ANCC contact hours.

Physician: The University of Iowa Roy J. and Lucille A. Carver College of Medicine designates this other activity (live and enduring materials) for a maximum of 13.50 AMA PRA Category 1 Credit(s)™. Physicians should claim only the credit commensurate with the extent of their participation in the activity.

Physician Associate: The University of Iowa Roy J. and



Lucille A. Carver College of Medicine has been authorized by the American Academy of Physician Associates (AAPA) to award AAPA Category 1 CME credit for activities planned in accordance with AAPA CME Criteria.

This activity is designated for 13.50 AAPA Category 1 CME credits. PAs should only claim credit commensurate with the extent of their participation.

Other Health Care Providers: A certificate of participation will be available after successful completion of an online evaluation. It is the responsibility of the licensees to determine if this continuing education activity meets the requirements of their professional licensure board.

The University of Iowa prohibits discrimination in employment, educational programs, and activities on the basis of race, creed, color, religion, national origin, age, sex, pregnancy (including childbirth and related conditions), disability, genetic information, status as a U.S. veteran, service in the U.S. military, sexual orientation, gender identity, or associational preferences. The university also affirms its commitment to providing equal opportunities and equal access to university facilities. For additional information on nondiscrimination policies, contact the Senior Director, Office of Civil Rights Compliance, the University of Iowa, 202 Jessup Hall, Iowa City, IA 52242-1316, 319-335-0705, daod-ocrc@uiowa.edu.

Individuals with disabilities are encouraged to attend all University of Iowa-sponsored events. If you are a person with a disability who requires a reasonable accommodation in order to participate in this program, please contact The Department of Internal Medicine Division of Gastroenterology and Hepatology in advance at (319) 356-3108.

OBJECTIVES

1. Raise awareness on MASLD and its consequences on health, including end-stage liver disease.
2. Review the state of the art on MASLD and update the medical community on health goals for these patients.
3. Enhance professional knowledge and skills through interactive sessions and networking opportunities with experts.
4. Comprehensive Understanding of MASLD: Describe the origins, diagnosis, natural history, and pathophysiology of MASLD, distinguishing it from other liver diseases.
5. Epidemiology and Prevention: Analyze the epidemiology of MASLD and evaluate effective prevention strategies from a public health perspective.
6. Risk Assessment and Management: Develop evidence-based approaches for assessing and managing cardiovascular risk, cancer risk, and alcohol-related liver disease in patients with MASLD.
7. Lifestyle and Therapeutic Interventions: Implement personalized lifestyle interventions, including dietary modifications and exercise programs, and assess the latest pharmacological, endoscopic, and surgical treatment options for MASLD.
8. Multidisciplinary Collaboration: Design and sustain a multidisciplinary MASLD clinic, fostering collaboration across specialties to optimize patient outcomes.
9. Transplantation Considerations: Identify and address the challenges of liver transplantation in MASH cirrhotic patients, including perioperative, anesthetic, and surgical considerations, as well as post-transplant care.

REGISTRATION

Regular Registration (through September 12, 2025)

Physicians	\$130.00
Pharmacists & Other Health Professionals	\$65.00
Trainees - Students, Residents & Fellows	\$50.00

Virtual Only Registration

Physicians	\$100.00
Pharmacists & Other Health Professionals	\$65.00
Trainees - Students, Residents & Fellows	\$40.00

Late Registration (from September 12, 2025-Day of conference)

Physicians	\$150.00
Pharmacists & Other Health Professionals	\$80.00
Trainees - Students, Residents & Fellows	\$65.00

CANCELLATION POLICY

If cancellation is requested prior to September 12, 2025, a full refund is available.

If cancellation is requested September 12, 2025 or later, a refund minus a \$50.00 cancellation fee is available.

If necessary, send cancellation request to cme@uiowa.edu.

REGISTER NOW



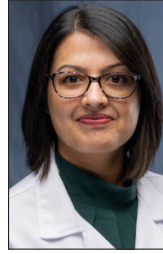
CLICK

PRESENTERS



Marta Tejedor Bravo, MD, MSc, PhD

Clinical Associate Professor
Division of Gastroenterology and Hepatology
Department of Internal Medicine
University of Iowa Health Care



Anu Sharma, MD

Clinical Assistant Professor
Division of Endocrinology, Diabetes & Metabolism
Department of Medicine
College of Medicine
University of Florida



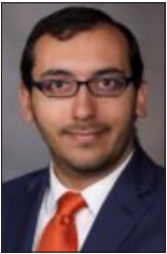
Antonio Sanchez, MD

Clinical Professor
Division of Gastroenterology and Hepatology
Department of Internal Medicine
University of Iowa Health Care



Felipe Isidro Sr., PhD

Exercise Science
Professor of Physical Education
Physical Exercise Health Consulting
Badalona, Spain



Juan Pablo Arab, MD, FRCPC

Transplant Hepatologist & Director of Alcohol Science
Stravitz-Sanyal Institute of Liver Disease and Metabolic Health
Division of Gastroenterology, Hepatology, and Nutrition
Virginia Commonwealth University



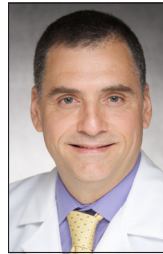
Tomohiro Tanaka, MD, MPH

Clinical Associate Professor
Division of Gastroenterology and Hepatology
Department of Internal Medicine
University of Iowa Health Care



Kyle Brown, MD, MSc

Professor
Division of Gastroenterology and Hepatology
Department of Internal Medicine
University of Iowa Health Care



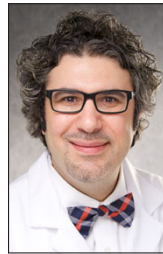
Marcelo Correria, MD, MSc, PhD

Clinical Assistant Professor
Division of Endocrinology and Metabolism
Department of Internal Medicine
University of Iowa Health Care



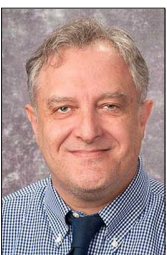
Veeral Ajmera, MD, MAS

Gastroenterologist and Transplant Hepatologist
Medical Director, Liver Transplantation
Associate Professor of Medicine
UC San Diego Health



Mohamad Mokadem, MD

Associate Professor
Division of Gastroenterology and Hepatology
Department of Internal Medicine
University of Iowa Health Care



Ramón Bataller, MD, PhD

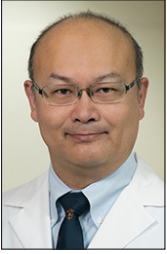
Chief of Hepatology
Hospital Clinic of Barcelona



Kymberly Watt, MD

Gastroenterologist, Internist, Transplant Hepatologist
Departments of Gastroenterology and Hepatology, Transplant Center
Mayo Clinic
Rochester, Minnesota

PRESENTERS



Wing-Kin Syn, MD, PhD

Division Director
Professor of Medicine
Saint Louis University School of Medicine
St. Albans, MO



Marcus Selzner, MD

Professor
General Surgery
University of Toronto
Toronto, Ontario, Canada



F. Gerald Wade, MD

Assistant Professor
Department of Internal Medicine
Division of General Internal Medicine
Saint Louis University School of Medicine



Marina Berenguer, MD, PhD

Professor of Medicine, Department of
Digestive Diseases, Hepatology and Liver
Transplantation Unit, La Fe University
Hospital and CIBERehd, Valencia, Spain



Nazia Selzner, MD, PhD

Associate Professor
University of Toronto
Toronto, Ontario, Canada



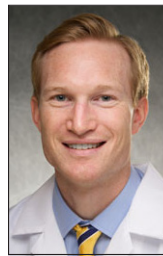
Sara Naimimohasses, MD, PhD

Clinical Assistant Professor
Division of Gastroenterology and Hepatology
Department of Internal Medicine
University of Iowa Health Care



Stuart McCluskey, HBSc, PhD, MD, FRCPC

Associate Professor
Medical Director of the Patient Blood
Management Program, and the Intraoperative
Coagulation Point of Care Program
Department of Anesthesia & Pain
Management
University Health Network, Sinai Health
Toronto, Ontario, Canada



Alan Gunderson, MD

Clinical Associate Professor
Clinical Director, James A Clifton Digestive
Health Center
Division of Gastroenterology and Hepatology
Department of Internal Medicine
University of Iowa Health Care



Yasameen Muzahim, MD

Clinical Assistant Professor
Division of Gastroenterology and Hepatology
Department of Internal Medicine
University of Iowa Health Care

AGENDA: METABOLIC HEALTH IN MOTION • DAY 1-SEPTEMBER 19, 2025 (CORAL BALLROOMS D & E)

7:30 - 8:00 AM **Registration & Continental Breakfast**

8:00 - 8:15 **Welcome Address**
Marta Tejedor Bravo, MBBS, PhD

MORNING SESSION

8:15 - 9:00 **MASLD Unveiled: Origins, Diagnosis and Natural History**
Antonio Sanchez, MD

9:00 - 9:45 **Epidemiology of MASLD and Prevention Strategies from a Public Health Perspective**
Juan Pablo Arab, MD, FRCPC

9:45 - 10:30 **Updated Mechanisms of MASLD Pathogenesis**
Marta Tejedor Bravo, MBBS, PhD

10:30 - 11:00 **Break**

11:00 - 11:45 **How are Obesity and MASLD linked to cancer?**
Kyle Brown, MD, MSc

11:45 - 12:30 **Assessment and Management of Cardiovascular Risk in Patients with MASLD**
Veeral Ajmera, MD, MAS

12:30 - 1:30 PM **Lunch**

AFTERNOON SESSION

1:30 - 2:15 PM **MetALD: How Alcohol and MASLD Interact**
Ramón Bataller, MD, PhD

2:15 - 3:00 **Nutritional Assessment and Management in Patients with MASLD**
Anu Sharma, MD

3:00 - 3:45 **Muscular Health: Sarcopenia in MASLD. How To Prescribe Exercise in our Clinics**
Felipe Isidro, PhD

3:45 - 4:15 **Break**

4:15 - 5:00 **Case Discussion with the Experts**
Sara Naimimohasses, MD, PhD and Alan Gunderson MD

END CME

5:00 - 5:30 PM **Vendor Exhibits**

AGENDA: METABOLIC HEALTH IN MOTION • DAY 2-SEPTEMBER 20, 2025 (CORAL BALLROOMS D & E)

7:30 - 8:00 AM **Breakfast**

8:00 - 8:15 **Welcome Address**
Antonio Sanchez, MD

MORNING SESSION

8:15 - 9:00 **Pharmacotherapy of Obesity: An Update**
Marcelo Correria, MD, MSc, PhD

9:00 - 9:45 **Surgical and Endoscopic Treatment Options in Patients with Obesity and MASLD**
Mohamad Mokadem, MD

9:45 - 10:30 **MASH Therapeutic Landscape: Current Options and Opportunities for Future Combination Trials**
Kymberly D. Watt, MD

10:30 - 11:00 **Break**

11:00 - 11:45 **The Power of Teamwork: Building and Sustaining a Multidisciplinary MASLD Clinic**
Wing Kin Syn, MD, PhD and F. Gerald Wade, MD

11:45 - 12:30 **Decompensated MASH cirrhotic patient: special considerations and contraindications to transplant**
Nazia Selzner, MD, PhD

12:30 - 1:30 PM **Lunch**

AFTERNOON SESSION

1:30 - 2:15 PM **Anesthetic Challenges Associated with Liver Transplant in MASH Patients**
Stuart McCluskey, HBSc, PhD, MD, FRCPC

2:15 - 3:00 **Surgical Challenges Associated with Liver Transplant in MASH Patients**
Marcus Selzner, MD

3:00 - 3:45 **Management of MASLD After Liver Transplantation**
Marina Berenguer, MD, PhD

3:45 - 4:15 **Break**

4:15 - 5:00 **Case Discussion with the Experts**
Tomohiro Tanaka, MD, MPH and Yasameen Muzahim, MD

END CME

5:00 - 5:30 **Vendor Exhibits (Coral Ballrooms D & E)**